

DOM LO
STUDIOS





MEDINA SIDE CHAIR

LIST \$3,075

MEDINA SIDE CHAIR

TYPE: DINING

DIMENSIONS

22" W x 24" D x 36" H x 18" SH

MATERIALS

Solid Colombian White Oak,
Wrapped Leather Cord, COM

LEAD-TIME

8-16 Weeks

ALL THE MAGIC OF THE MEDINA

MARRAKECH

The Medina Side Chair was inspired by the Medina of Marrakech in Morocco. The Medina is a historic meeting center for the arts and politics. It's a cultural and economic hub for living history. Much like Roman Forums and our Modern Dining Rooms—it's a magical place to gather. Upon our personal travels to the Medina, we were struck by an architectural feature that may be overlooked due to its functional simplicity, and lack of historic meaning. Large black spheres are mounted at the edge of the road to prevent traffic from overflowing from the streets to the sidewalks. In their abundance, they are quite striking in contrast to the light stone grounds and walls. We wanted to conceptualize these spheres by the design of the circular shapes within the stretchers of the chair's backrest.

CUSTOMIZATIONS

IDENTITY

STAIN

Natural Oak
Mahogany Oak
Caffé Oak
Matte Black Oak
Brushed Black Oak

COM

1 Yard Required
50 Meter Spool Cord

FABRICS

ITALIAN ULTRA SUEDE



INDIGO



CAFFÈ



TERRACOTTA



OLIVE GREEN



CAMEL



STONE



BEIGE

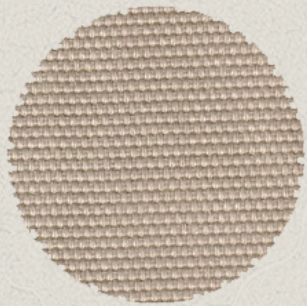


GRAY

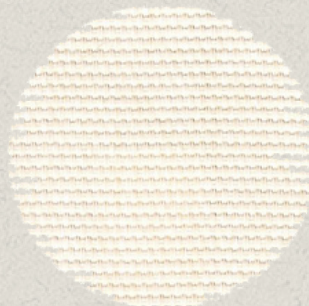


IVORY

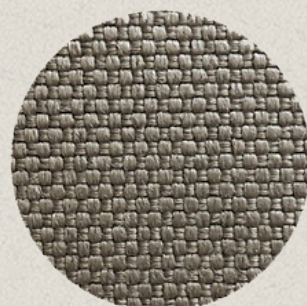
ITALIAN TEXTURED WOVEN



STONE



IVORY



GRAY

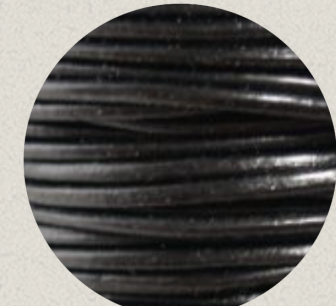
LEATHER CORD



NATURAL



CAFFÈ



BLACK

FINISHES

SOLID WOOD OAK



NATURAL



MAHOGANY



CAFFÈ



MATTE
BLACK



BRUSHED
BLACK